

---

## PRODUCT RANGE

- ▶ Sparkle Laser Marking / Engraving / Cutting Machines
- ▶ Jewellery Laser Hallmarking Machines
- ▶ Jewellery Laser Spot Welding Machines
- ▶ 3D Metal Laser Engraving - Die Making Machine
- ▶ 10x High Speed / Life Metal Tube Machines for Wood / Acrylic
- ▶ CO2 Glass Tube Cutting / Engraving Machines

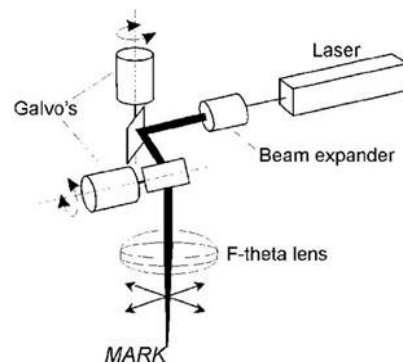


# Laser Marking



## SPARKLE Fiber Laser Marking Machine.

Industrial laser engraving is rapidly growing industry in the world. Particularly because there is virtually no limit to the number of material that can be engraved whether you are using metal like SS, MS, Brass and Copper etc.. Widely used in electronic part and component, electrical engineering, car and automotive parts, instruments, aviation and aerospace, military products, cutting tools, surgical instruments clock and jewelry etc.



### **Features & Benefits**

#### Performance

- Highly versatile and offers high precision marking.
- Marks all surfaces with a min. line width of 0.01mm.
- Bar code/2D Code/Sq. Number Marking possible.
- Supports high-definition logo and image marking.
- High speed marking upto 8000mm/s.

#### Reliability

- No fear of shock during operation.
- Superior quality Laser Module (life 50k to 100k).
- Ability to work 24/7.

#### Easy of USE

- Easy to move and operate.
- Desktop and Portable structure as requirement.
- Easy to handle software EzCAD.
- Software supports files of JPG/.BMP/.PLT/.DXF
- Maintenance free.

#### Security

- Efficient Air cooling System.
- The High speed flow pump offer working stability.
- CE Certified Products eliminates all risk for users.



Desktop Table Mounted EI03



Desktop Table Mounted EI13

## SPECIFICATIONS

<b>Laser Type</b>	Fiber	<b>Laser Power</b>	20W/30W/50W
<b>Service Life</b>	50K to 100K Hours	<b>Marking Depth</b>	0 ~ 1 Mm
<b>Engraving Speed</b>	≤8000mm/s	<b>Cooling System</b>	Air-cooling
<b>Min Linear width</b>	0.01mm	<b>Marking Depth</b>	0.01-0.5mm (Depends on Material)
<b>Laser Wavelength</b>	1064nm	<b>Positioning Accuracy</b>	0.005mm
<b>Optional Marking Area</b>	110mm*110 mm, 175mm*175mm, 200mm*200mm	<b>Graphic Format Supported</b>	PLT, DXF, AI, DST, BMP, JPG, GIF, .PNG, ,etc.
<b>Power Consumption:</b>	600W	<b>Operating Voltage</b>	220V/50Hz

## OPTIONAL ACCESSORIES



Rotary Attachment



Fume Extractor



X-Y Table



Desktop Table Mounted EI08

# Welding



## SPECIFICATIONS

Models No.	SMLT-100/SMLT-200W/SMLT-300
Output Power	100W/200w/300w
Single-Pulse Energy	0-100J
Laser Source	ND:YAG
Laser Wavelength	1064nm
Pump Lamp	Pulsed Xenon Lamp
Pulse Width	0.1-15ms Adjustable
Pulse Repeated Frequency	1-20Hz Adjustable
Welding Spot Diameter	0.2-1.5 mm Adjustable
Observing System	Microscope / CCD – Based on Requirement
Cooling System	Water Chiller
Power Supply	Single Phase AC 220V +/- 10%, 50Hz / 60Hz, 4KW
Running Environment	Temp 5 C – 28 C Humidity 5% - 70%

# Hallmarking

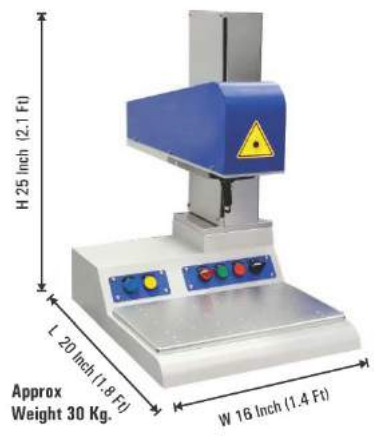


Table Top Machine



## SPECIFICATIONS

<b>Laser Type</b>	Fiber	<b>Laser Power</b>	20W/30W/50W
<b>Service Life</b>	50K to 100K Hours	<b>Marking Depth</b>	0 ~ 1 Mm
<b>Engraving Speed</b>	≤8000mm/s	<b>Cooling System</b>	Air-cooling
<b>Min Linear width</b>	0.01mm	<b>Marking Depth</b>	0.01-0.5mm (Depends on Material)
<b>Laser Wavelength</b>	1064nm	<b>Positioning Accuracy</b>	0.005mm
<b>Optional Marking Area</b>	110mm*110 mm, 175mm*175mm, 200mm*200mm	<b>Graphic Format Supported</b>	PLT, DXF, AI, DST, BMP, JPG, GIF, PNG, ,etc.
<b>Power Consumption:</b>	600W	<b>Operating Voltage</b>	220V/50Hz



# CO2 Laser



Model	SMLT EC 3.2	SMLT EC 6.4 desktop	SMLT EC 6.4 Standard
Laser tube	Water cooling sealed glass Co2 Laser Tube		
Laser Power	40W	60W/80W	80W
Working Size	300mm x 200mm	600mmx400mm	600mmx400mm
Control System	Corel Laser	Corel Laser / Ruida	Ruida
File Support	BPM, JPG,CDR,DWG,DXF,ZIP,DDF,PLT,AL.		
Software supported	Corel Laser	Corel Laser / RD Works	RD Wvorks
Laser Tube (Life Hours)	2500 To 3000 Hours	7000 To 9000 Hours	10000-12000 Hours
Chiller	Water Pump	Chiller CW3000	Chiller CW3000
Weight of Machine	39KG	120KG	170KG
Warranty	12 Months		



Model	SMLT EC 9.6	SMLT EC 13.9	SMLT EC 13.9P
Laser tube	Water cooling sealed glass Co2 Laser Tube		
Laser Power	80W/100W	100W/130W	100W/130W
Working Size	900mm x 600mm	1300mmx900mm	1300mmx900mm
Control System	Ruida	Ruida	Ruida
Format Support	BPM, JPG,CDR,DWG,DXF,ZIP,DDF,PLT,AL.		
Software supported	RD Works	RD Works	RD Works
Laser Tube (Life Hours)	10000-12000 Hours	10000-12000 Hours	10000-12000 Hours
Chiller	Chiller CW5000	Chiller CW5200	Chiller CW5200
Weight of Machine	350KG	480KG	540KG
Warranty	12 Months		



Model	SMT EC 13.25	MMM-30 / MMM100	MMG-100
Laser tube	Water cooling sealed glass Co2 Laser Tube	DAVI (RF) Metal Tube	Glass Tube
Laser Power	100W/130W	30W / 100W	100w
Working Size	1300mmX2500mm	300mmX300mm / 600mmX600mm	300X300mm
Control System	Ruida	EZ CAD	EZ CAD
Format Support	BPM,JPG,CDR,DWG,DXF,ZIP,DDF,PLT,AI.	BPM,JPG,CDR,DWG,DXF,ZIP,DDF,PLT,AI.	BPM,JPG,CDR,DWG,DXF,ZIP,DDF,PLT,AI.
Software supported	RD Works	EZ CAD	EZ CAD
Laser Tube (Life Hours)	12000-14000	70000-90000	10000-12000
Chiller	Chiller CW5200	Air Cooling	Chiller CW5000
Weight of Machine	650KG	200kg	250kg
Warranty	12 Months		

## SMT Co2 Laser Consumables



Reci Laser Tube

80w, 100w



EFR Laser Tube

60w, 80w, 100w, 130w



Power Supply Unit

60w, 80w, 100w, 150w



Chiller

CW3000, CW5000, CW5200, CW5300



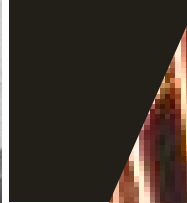
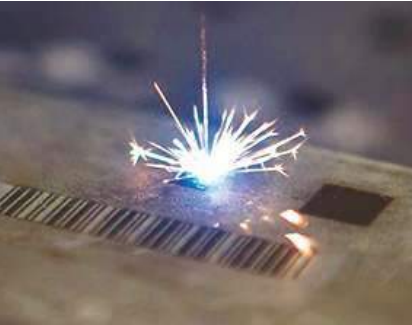
Focus Lens



Mirror Lens



Exhaust Blower



## Office:

### SM LaserTechnology

No. C-348, Samruddi

8<sup>th</sup> Cross, Peenya Indl Area,

1<sup>st</sup> Stage, Bangalore-560058.

☎ +91-9686356084, +91-7019408407

✉ info@sparklemachinery.com

🌐 www.sparklemachinery.com